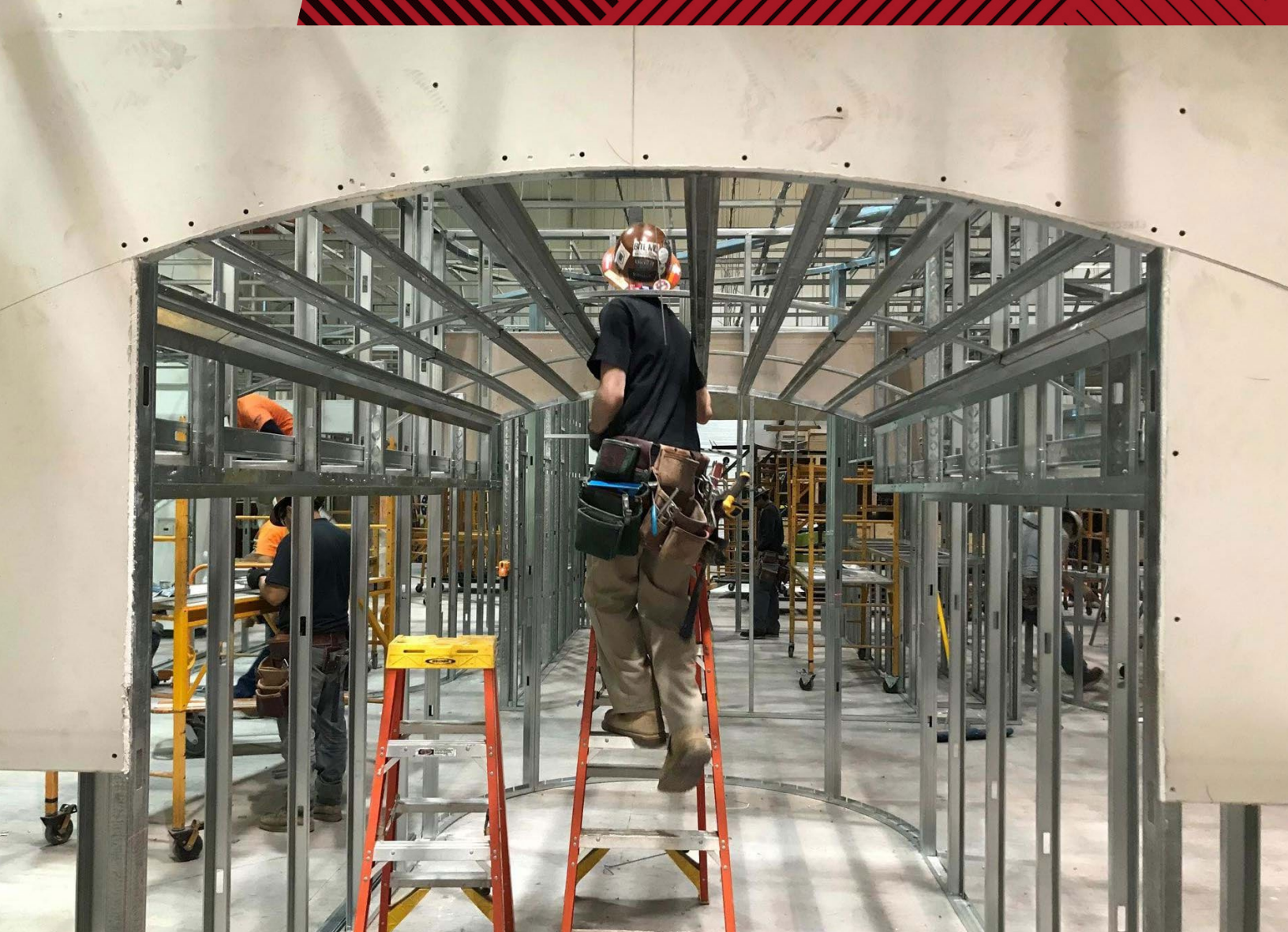


# **RAPID**WIRE<sup>®</sup>



*Photo credit: Southwest Carpenters Training Fund*

## **PRE-TIED WIRE**

*Premium pre-tied and straight cut wire products and accessories for overhead suspension fastening*



## ***PRE-TIED WIRE WITH CLIPS***

---

Neatly packaged in bundles of 100, our pre-tied wire with attached clips allows fast installation on the jobsite. Choose from a variety of clip types to meet the requirements of almost any application.








# WITH OR WITHOUT CLIP

**RAPIDWIRE**

- Neatly Packaged in Bundles of 100
- Available Lengths (in feet): 4, 6, 8, 10, 12, 14, 16, 20
- Custom lengths and clips upon request

Replace trailing "L" in part number with desired length. 12 gauge electrical glazed wire and clean pileable is standard.



<p><b>1</b></p>  <p><b>3" EYE LAG</b> Wood Substrates <b>RWEL300-L</b></p> <p><b>4" EYE LAG</b> also available</p>	<p><b>2</b></p>  <p><b>EYE LAG TEK</b> <b>RWELT14-L</b></p>	<p><b>3</b></p>  <p><b>ANGLE CLIP</b> <b>RWAC-L</b></p>	<p><b>4</b></p>  <p><b>RAMSET SPC 78</b> 7/8" Pin &amp; Angle Clip Ballistic Point <b>RWSPC78-L</b></p> <p><b>RAMSET SPC 114</b> 1-1/4" Pin &amp; Angle Clip Ballistic Point <b>RWSPC114-L</b></p>	<p><b>5</b></p>  <p><b>RAMSET SDC 100</b> .125" Pin &amp; Angle Clip <b>RWSDC100-L</b></p> <p><b>RAMSET SDC 125</b> 1-1/4" Pin &amp; Angle Clip <b>RWSDC125-L</b></p>
---	--	--	--	--

<p><b>6</b></p> <p><b>RAMSET 34CLIP</b> 3/4" Pin &amp; Angle Clip <b>RW34CLIP-L</b></p>	<p><b>7</b></p> <p><b>BLUEPOINT .157</b> 7/8" Pin &amp; Angle Clip Ballistic Point <b>SEE PRICE LIST FOR PART #</b></p> <p><b>BLUEPOINT .157</b> 1-1/4" Pin &amp; Angle Clip Ballistic Point <b>SEE PRICE LIST FOR PART #</b></p>	<p><b>8</b></p> <p><b>BLUEPOINT .157</b> 1" Pin &amp; Angle Clip Ballistic Point <b>SEE PRICE LIST FOR PART #</b></p>	<p><b>9</b></p> <p><b>BLUEPOINT .145</b> 1-1/4" Pin &amp; Angle Clip Ballistic Point <b>RWSPC78-L</b></p>	<p><b>10</b></p> <p><b>TIRE WIRE WEDGE</b> <b>RWTWA-L</b></p>
---	---	---	---	---



<p><b>SINGLE LOOP</b> <b>RWSL-L</b></p>	<p><b>PIG TAIL</b> <b>RWPT-L</b></p>	<p><b>RAMSET SDC 100</b> 1" Pin &amp; Angle Clip <b>RWDT100-L</b></p> <p><b>RAMSET SDC 125</b> 1-1/4" Pin &amp; Angle Clip <b>RWDT125-L</b></p> <p><i>Double-Tied with Two 12 Gauge Wires</i></p>	<p><b>BEAM CLIP</b> for 1/8"-1/4" Flange <b>RWBC14-L</b></p> <p><b>BEAM CLIP</b> for 5/16"-1/2" Flange <b>RWBC12-L</b></p>	<p><b>STRAIGHT WIRE</b> <b>RW12G-L</b></p>
---	--	---	--	--

# **PRE-TIED WIRE BUNDLE PACKAGING**

Pallet Size 42" W X WIRE LENGTH



## **50 BUNDLES**

Neatly Packaged in  
Bundles of 100



## **LESS THAN 50 BUNDLES**

Neatly Packaged in  
Bundles of 100



## **NEATLY PACKAGED**

Bundles of 100

## **ORDERS**

**972-488-4200**

**ORDERS@PROLINEPRODUCTSINC.COM**

RapidWire prepaid on \$10,000.00 / Minimum order amount: \$500.00  
(if minimum prepaid order amount is not met, freight will be prepaid and added to the invoice)

PAYMENT TERMS: All products are net 30 days

**PROLINE**  
PRODUCTS INC.

11625 Columbia Center Drive / Suite 100 / Dallas, TX 75229

**RAPIDWIRE**

**972-488-4200 / PROLINEPRODUCTSINC.COM**